

Audfly Technology

Audfly Directional Speaker Product Catalog

<https://www.audflyspeaker.com/>



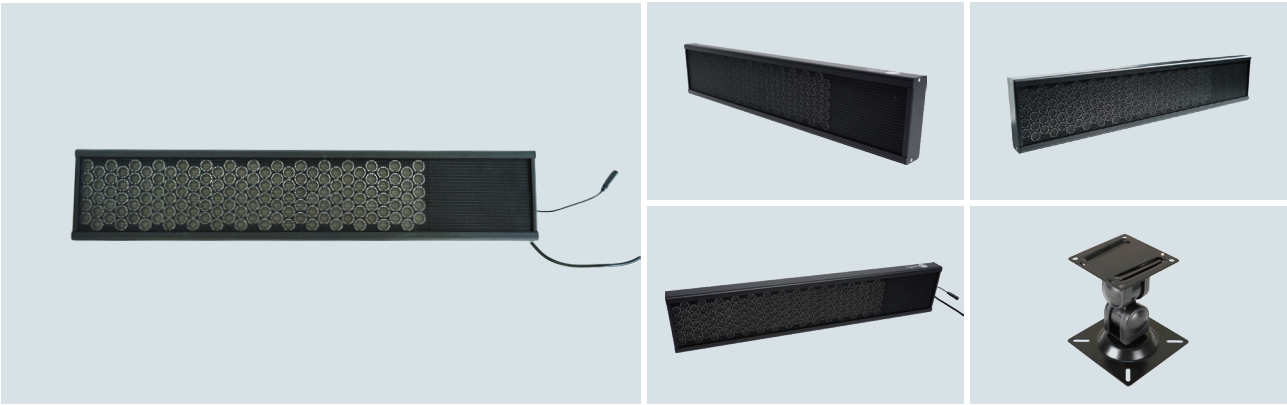
3F,4#Block,No.78,Keling Road,
Suzhou Hi-Tech Zone,Suzhou,Jiangsu,China.215000



contactus@audfly.com

Model L1 >>

Model L is specially designed for semi-outdoor use. With a high sound pressure level , model L can meet the complex demand in noisy environment outdoors. The strip-shaped appearance makes it very suitable for integration application with display products such as advertising machines and digital signs.



Model	FSC2- L1	Power Requirements	24V DC/3A
Volume (Maximum SPL)	85dB@2m/1KHz	Amplifier Type	Amplifier Built-in
Directivity Angle	<15° (-20dB)	Rated Power	25 W
Frequency Range	600Hz-13kHz	Input sensitivity	0.5 Vrms
Installed Accessories	75x75mm Universal Bracket	Dimension	590 x 118 x 36mm
Audio Line	3.5mm Dual-Channel Audio Cable	Weight	1.7 kg
Input Interface	3.5mm AUX	Color	Black
Power Adapter Spec.	(Input) 100-240Vac 50/60Hz (Output) 24V DC/3A	Temperature Range	minus -20°C to 65°C

Model L1 Application

Model L is commonly used in semi-outdoor scenes including advertising machine and billboard. It's also can be used in noisy indoor applications including advertising, digital signs, retail stores, trade shows, train station etc. It's a revolutionary new audio technology that provides an effective way to deliver sound along a fixed direction in an extremely narrow beam, in this way the sound could be precisely controlled and target your desired listening area.



Customized Directional Sound Modules & Products >>

As one of the foremost experts in directed audio technology all over the world, Audfly Technology is able to provide customers with personalized, customized directional sound modules and products, accordingly to their special requirements on size, shape, color, acoustic specifications, etc.

With the customized directional sound modules and products, you can easily integrate it into your original products or applications, so that you will be able to broadcast your important audio messages straight to your target audience without disturbing others or increase the ambient noise.

Multiple solutions are available to address your specific application needs. Join us to seamlessly deliver sound exactly where you want it!

Customize Product Development Process



01 Define

- Predefine
- PRD (Initial)
- Technological & Commercial
- Feasibility
- Strategic Coordination
- Offer for Reservation

02 Concept

- Concept Verification Testing / Design Drawing
- Final Signature of PRD
- Project Schedule (Initial)

03 Design

- Design Verification Testing (DVT)
- Official Offer
- Customize PO

04 Confirm

- Customers Confirm Samples

05 Industrialization

- Trial Batch Production

06 Production

- Batch Production
- Shipping Quantity

Audfly's advantages in directed audio »

Audfly stands as the pioneering and largest company exclusively focused on directional sound technology.

It was the first in China to venture into this field and achieve its successful commercial application.

Audfly provides an extensive product range with the option for customization.

This flexibility allows Audfly to cater to the diverse requirements of customers across various industries.

Audfly has pursued multiple technical avenues.

By advancing directional sound technology into its third generation, Audfly continues to demonstrate its commitment to progressiveness and leadership in this field through continuous technical refinement.



**Global Frontrunner In
Directional Audio Solutions**